

# Company Presentation

PRIMUS DELPHI GROUP GmbH

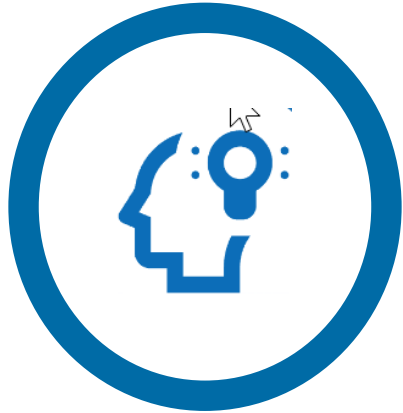


ORACLE

Partner

ORACLE  
**NetSuite**  
Alliance Partner

> 25 years Oracle experience



> 80 Consultants



ORACLE  
**NetSuite**  
Alliance Partner

PRIMUS Solutions AG  
a member of



Bergfeldstraße - D-83607 Holzkirchen  
[www.primus-delphi-group.com](http://www.primus-delphi-group.com)



Long-term customer  
relationships

- In 2008 PRIMUS DELPHI GROUP GmbH was founded as a joint venture of PRIMUS Solutions AG and delphi Business Information Consultants GmbH.
- Both founding companies have been Oracle Partners since 1992/ 1993.
- The following companies belong to the company group: PRIMUS Solutions AG, delphi Business Information Consultants GmbH, DELPHI ITALY S.r.l., PDG Slovakia s.r.o.
- PDG is the largest German-language Oracle E-Business Suite Certified Partner worldwide.
- PDG dedicates itself to the needs of Oracle E-Business Suite customers, providing solutions that go beyond the standard functionality offered by Oracle.
- For Oracle Financials Cloud Services PDG is offering pre-configured and proven fixed-price - fixed scope implementation offers for the German market.

## Applications

Oracle EBS R12.1 + 12.2 Financial Management  
Oracle EBS R12.1 + 12.2 Supply Chain

**ORACLE** | Sell  
Partner

*Expertise in*  
**Oracle E-Business Suite**  
in EMEA-BENELUX

## Cloud Services

Oracle Financials Cloud

## Database

Oracle EE + SE 11.2, 12c, 19c  
Oracle Enterprise Manager 19c

**ORACLE** | Sell  
Partner

*Expertise in*  
**Oracle x86 Systems**  
in EMEA-BENELUX

## Middleware

Oracle IAS + WebLogic  
Java Plattform – Standard Edition 7  
Oracle Business Intelligence Foundation 10 + Suite 11g

**ORACLE** | Sell  
Partner

*Expertise in*  
**Oracle Solaris**  
in EMEA-BENELUX

## Server and Storage Systems

Oracle Linux 5 + 6 + 7  
Oracle Solaris 10 + 11  
SPARC based Servers T4 + T5 + T7 + S7  
Netapp E2824 + EF280

## ■ collaborative

We support our business partners in achieving their business goals.

## ■ flexible

Our teams are distinguished by their high degree in flexibility and quality.

## ■ pragmatic

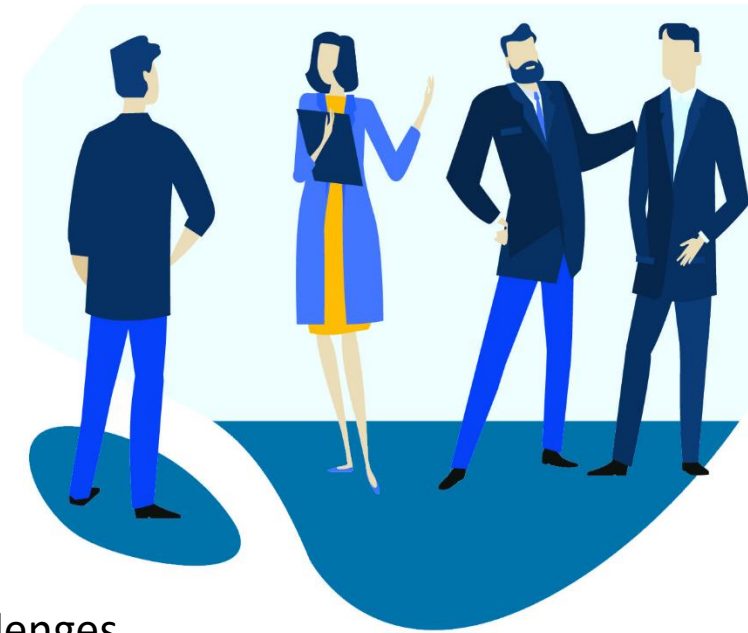
We work in small, efficient project teams, using a practice-oriented methodology.

## ■ goal-oriented

Our approach is goal-oriented, as we are focused on our customers' targets and challenges.

## ■ innovative

Innovation is our passion and we are driven to ensure the quality of our work through continuous exchange and further education.





## ■ have extensive experience

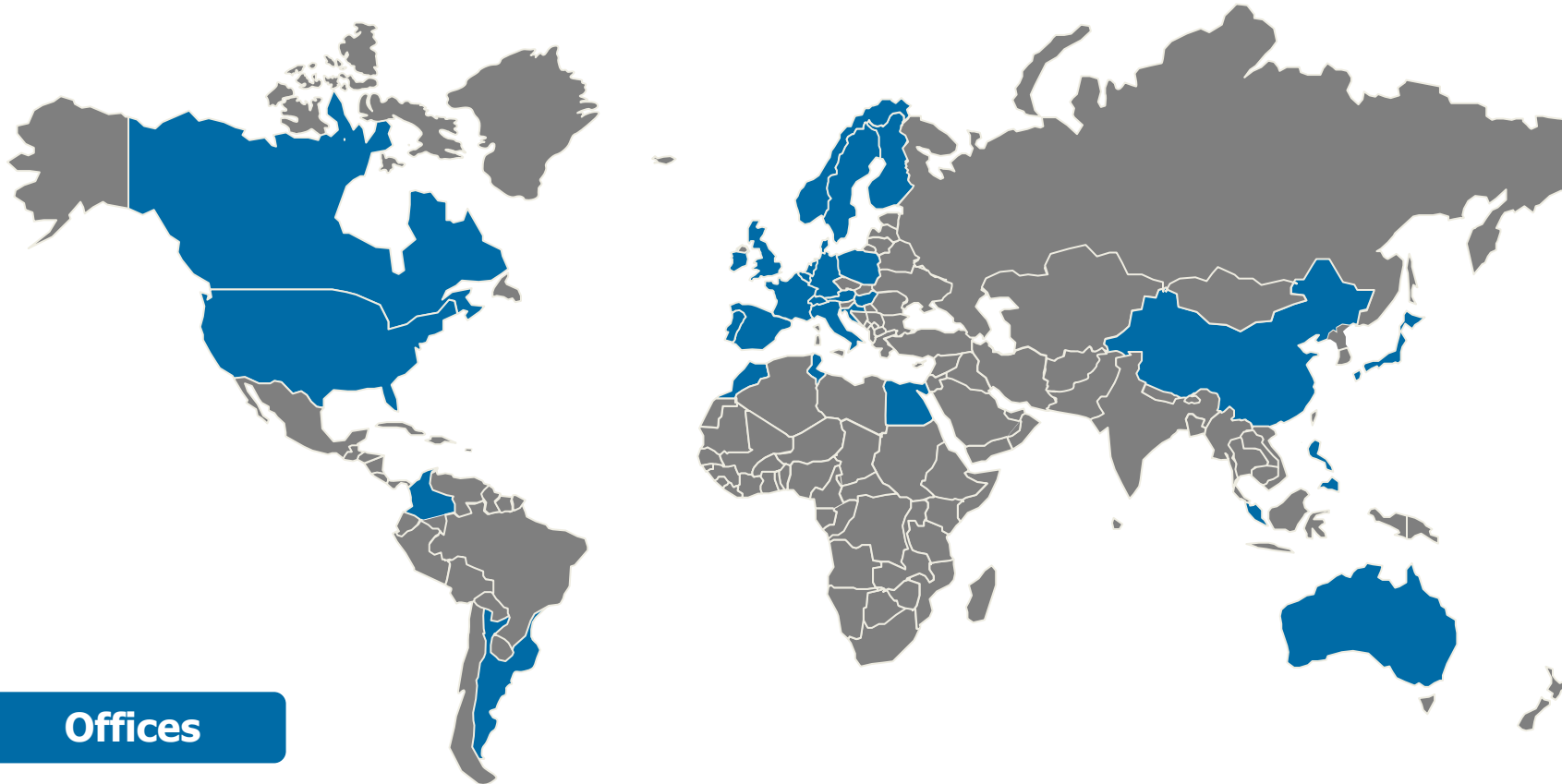
- Oracle EBS Implementations
- Oracle Cloud Implementations
- Oracle NetSuite Implementations
- Multinational Rollouts
- Process experience
- Process optimizations

## ■ have substantial knowledge

- Technical Oracle know how
- Oracle ERP know how
- Industry know how
- country specifications/ localizations

# Well-established around the world

## Customer & Projects



## Offices

### Hamburg

PRIMUS DELPHI GROUP GmbH  
Borsteler Chaussee 43  
D – 22453 Hamburg  
Tel.: +49 (0) 40 / 284 186 15

### Munich

PRIMUS DELPHI GROUP GmbH  
Bergfeldstr. 9  
D – 83607 Holzkirchen bei München  
Tel.: +49 (0) 80 24 / 902 69 0

### Milan

delphi Italy S.r.l  
Sede Legale:  
Via Gustavo Fara 26  
I-20124 Milano

### Bratislava

PDG Slovakia s.r.o.  
Suché mýto 1,  
811 03 Bratislava,  
Slovak republic

# What makes PDG special?



## **TEAM** (> 80 Consultants)

- Industry Know-how
- Technical Know-how
- Project Experience



## **PROJECT METHOD**

- Agile based
  - JIRA
  - Confluence

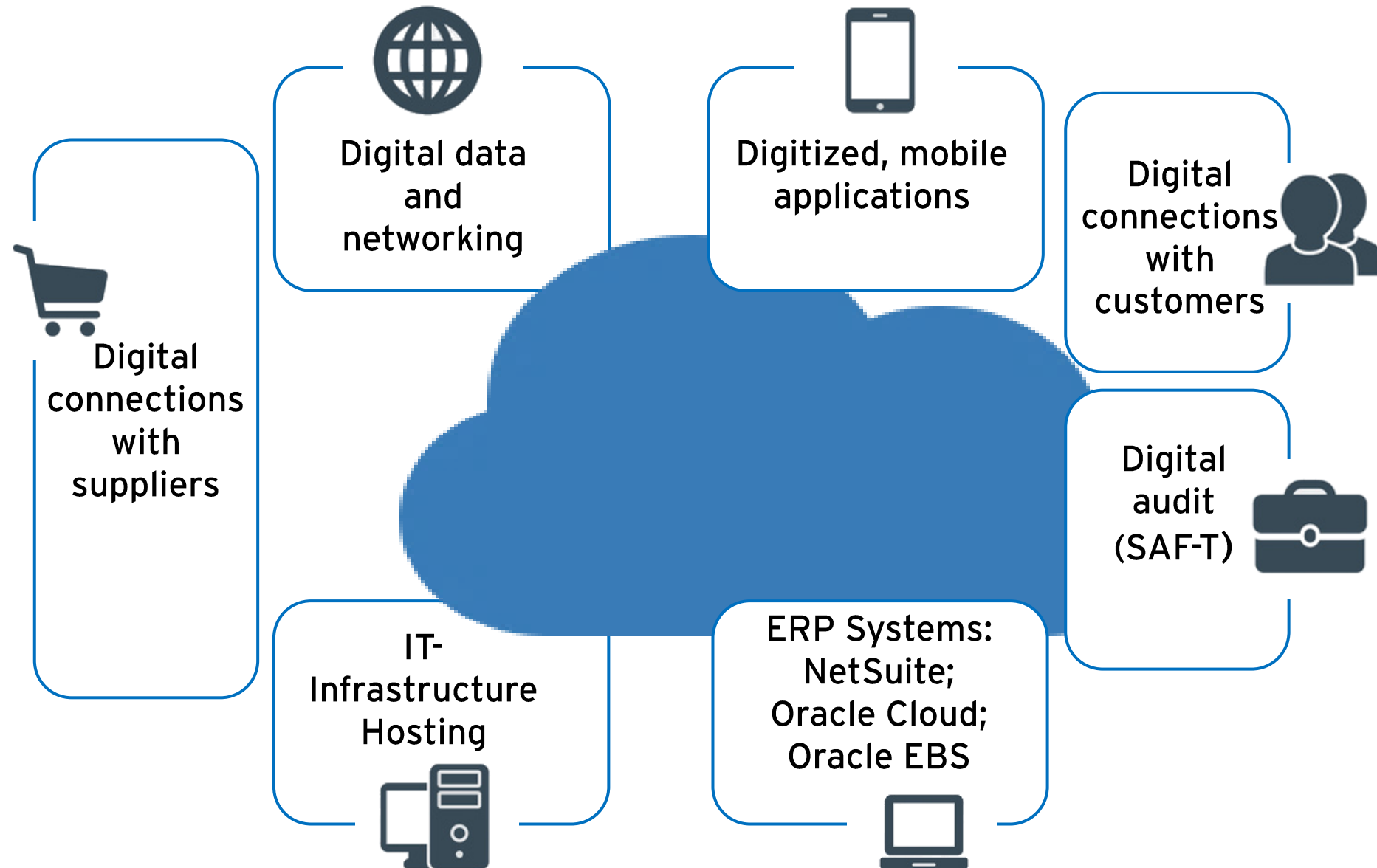


## **Time**

- MVP Project Approach
- 4-5 mont from Start to GoLive



# What we offer





**Consulting**  
**Implementations**  
**Development**  
**Training**  
**Hardware**  
**Outsourcing**

**ORACLE  
NETSUITE**

## NetSuite Stairway For Financials First

[www.netsuite.co.uk/financials](http://www.netsuite.co.uk/financials)



### Establish

- Financials
- CRM
- Analytics and dashboards

### Elevate

- International expansion
- People management
- Planning and budgeting
- Asset management

### Expand

- Project management
- Billing and advanced revenue
- Advanced reporting
- Requisitions and procurement
- Inventory management

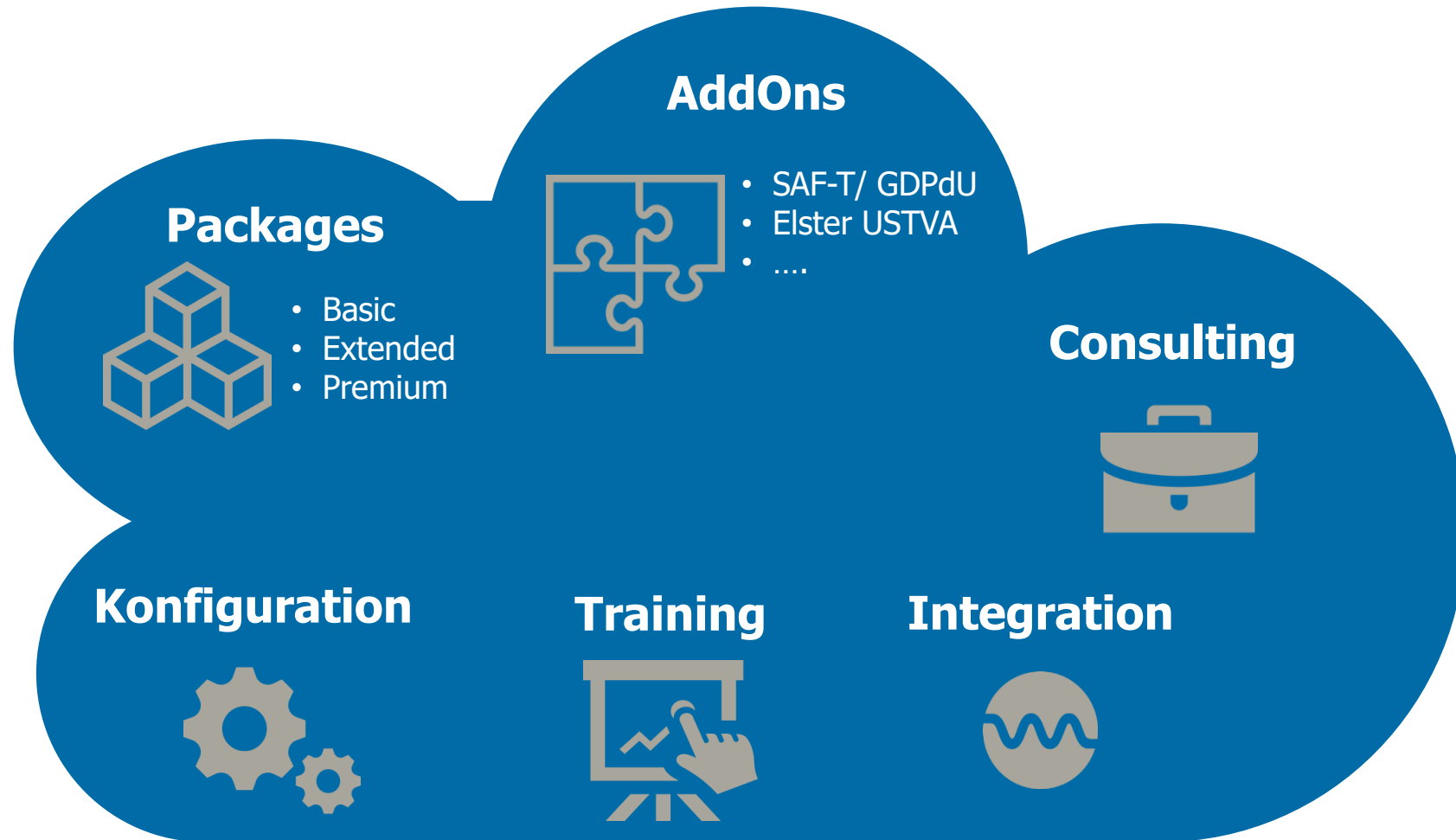
### Accelerate

- Expense management
- Fulfilment
- Ecommerce
- Multi-book accounting

### Dominate

- Talent management
- Email marketing
- Advanced planning







**Enterprise Resource Planning**



**Supply Chain Management**



**Human Capital Management**



- Satisfy lokal requirements
- Meet legal requirements
- Automate business processes
- Give structure to processes for maximum transparency
- Integrate tasks in a workflow
- Simplify administrative processes



## Legal Requirements

- GoBD/GDPdU Interface digital Audit (SAF-T)
- UstVA Servicepaket
- VAT ID Verification
- Confirmation of Arrival
- Assests Analysis



## Finance and Accounting

- Invoice Creation according to ZUGFeRD Standard
- TransportCostControll
- Cash Receipt Management
- Approval Workflow for Invoices



## SCM, Inventory, Logistics

- Long-Term Distributor Statement
- Time Slot Management





## Legal Requirements:





- General Ledger
- Accounts Payable
- Accounts Receivable
- Cash Management
- Fixed Assets
- Payments
- Tax
- Sub ledger Accounting



## German AddOns (Lokalizations)

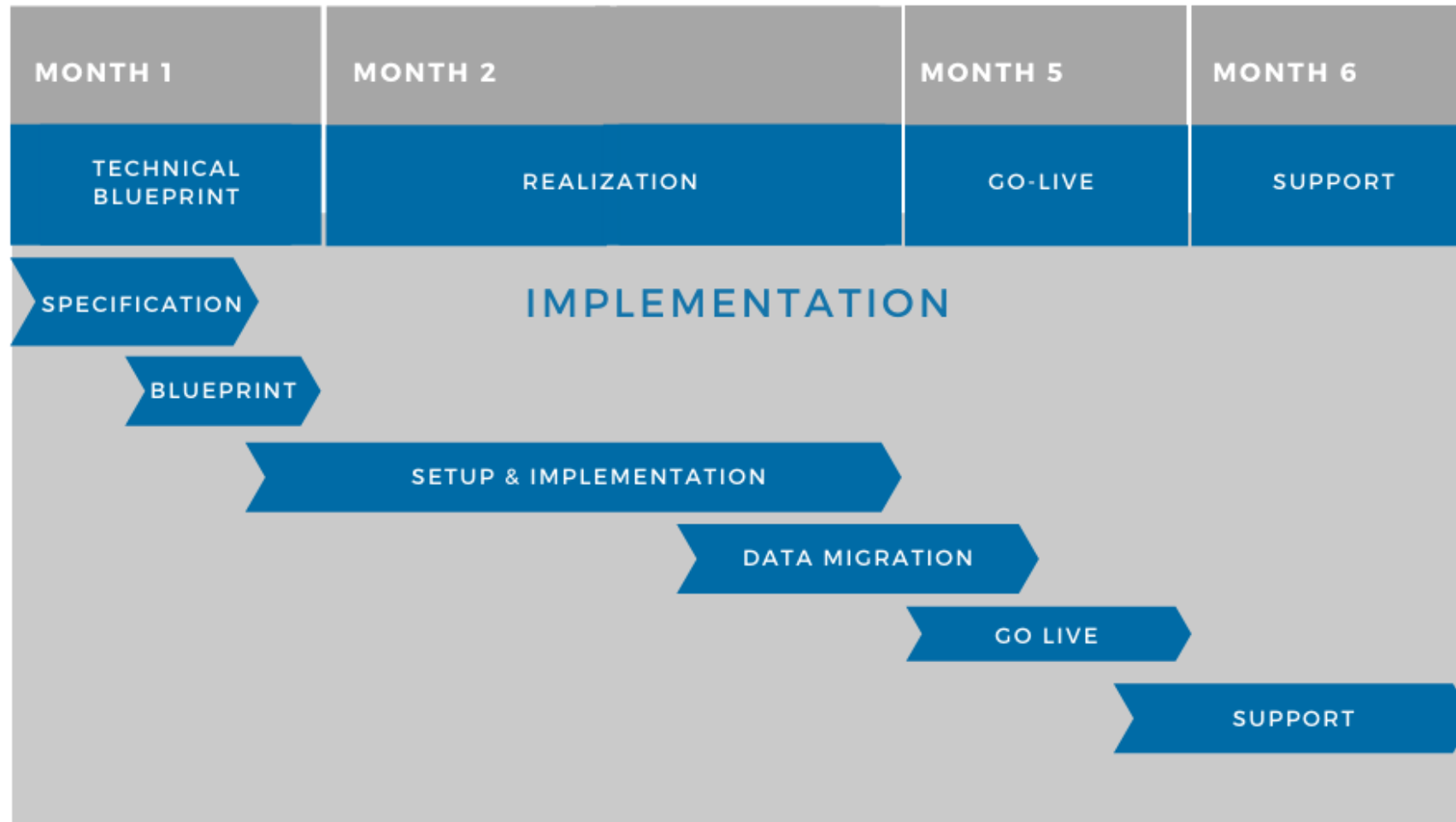


- SEPA (DK-Standard)
- Bank-Statement Interface Deutschen Bank
- SAF-T (GoBD/GDPDU Interface)
- VAT Processing
  - calculate
  - reconcile
  - report



## 4 months from Signing to Go-Live

Tight but realistic timeline with sole focus on finance process till go-line



## Confluence

- Saves the entire project documentation in an uniform structure accessible to all project team members.
- PDG „Project Wiki“

## JIRA

- Activity & Issue-Tracking



# Our Customers

## NetSuite



## PDG AddOns GoBD/ VAT



## ORACLE E-Business Suite



## Custom Consulting



## System Service



# Reference GoBD/ GDPdU Interface



- One integrated solution, including software, technical advice, installation and training
- PC solutions; no server installation
- Includes an interface to the IDEA® audit software
- Full integration into the E-Business Suite
- (EBS Release 11i und Release 12)
- PDG GDPdU solution has been successfully deployed by more than 90 customers



*„....a few minutes ago I talked to the manager of our finance department in Berlin. Thanks to the PDG GDPdU AddOn, our recent tax audit has been completed without any issues. The auditor was pleasantly surprised. We did not expect that the data would be so competently and well-prepared using Oracle EBS. Therefore I would like to thank you and your entire team personally once again for the outstanding support ....“*

- European Roll-out of numerous Oracle E-Business Suite modules in Germany and Italy
- Migration of large master data from legacy systems in the new EBS Modules.
- Full technical support and consultancy services for Oracle E-Business Suite
- Replacement of existing „Cognos“ system with Oracle Business Intelligence, redesign of DW and Reports
- Upgrade of Oracle EBS R11i instance to R12 including data migration of all manual customizations
- Processes optimization and replacement of all customizations in SCM (Logistics) with standard EBS functionalities.

## Huhtamaki

D-Ronsberg  
Packaging Industry  
1.300 employees



Photo:  
Huhtamaki Flexible Packaging Germany

- Technical support for migrating from legacy system HP 3000 to Oracle ERP EBS 11i
- Full technical support and consultancy services for Oracle E-Business Suite
- Technical spin-off of Huhtamaki-EBS systems and migration of full ERP-Systems on our local Hosting Systems
- System and processes optimization with upgrade to Oracle EBS R12
- Development customization based on Oracle Tools (e.g. APEX)

**LOPAREX**

D-Forchheim  
manufacturer of release liners

800 employees



Photo: Loparex



UK, IT, D, SK, CZ,...  
Engineer To Order  
provider of equipment and  
services for datacenters  
20.000 employees  
> 8.000 User

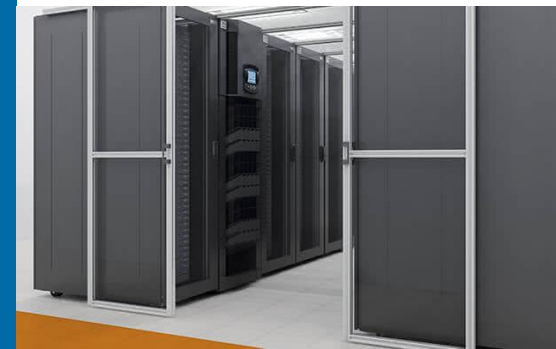


Photo: Vertiv Group

- Design, Implementation and Roll-out of European IT Project including Manufacturing, Logistics in the Oracle EBS
- Sales, Purchasing, Planning, Logistics, Manufacturing, Project Planning, Finance
- 5 factories in 4 countries,  
19 distribution hubs with very complex planning processes and inter-company transactions
- Timeline till Go-Live: 2 years, gradual go-live for all companies
- Migration from 4 different ERP systems and harmonization of master data and processes
- Customization and process optimization, built interfaces for detailed planning, WMS



- Harmonization of master data, structures, and processes in all European branch offices, taking into account country-specific legal requirements
- Implementation of a uniform IT platform for all European companies and rollout in 14 countries
- Design, planning, and implementation of the ERP system, including finance, sales/purchasing, production, supply chain and demand planning, and maintenance
- Electronic connections with corporate groups and business partners
- Integration of high-bay warehouses into the logistics process
- System support and upgrade to the latest version of ERP software

**Panasonic**  
ideas for life

D-Ottobrunn  
Electronic components  
230 employees

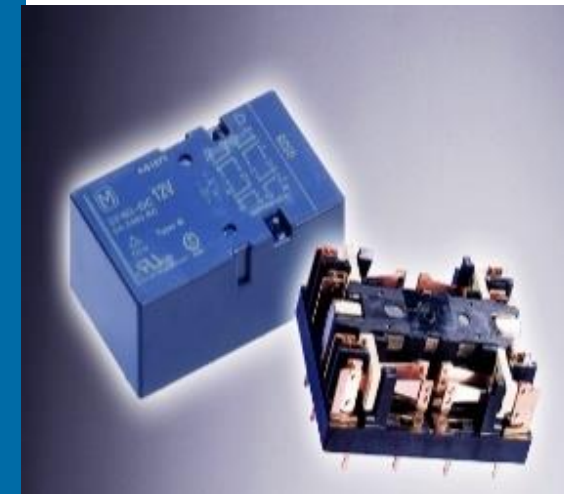


Photo: Panasonic  
Electric Works Europe AG



- Implemented Oracle ERP System (2005)
- Roll-out of Finance module (including automated invoice scanning solution) and Purchasing
- Challenges
  - Roll-out of a „Global Single Instance“
  - Complex customizations
- Current system-development activities and customization of new data-structures (since 2005)
  - Upgrades
  - Support
  - Development of a central Portal for customer transactions (Adapter to different Systems)



I-Genua; D-Rostock  
Tourism sector  
>30.000 employees



Photo: AIDA Cruises – German  
Branch of Costa Crociere S.p.A

- Adaptation of centralized, worldwide installation of NI Oracle to German requirements
- Development of an inter-company process based on the standard functionalities of Oracle EBS, taking into consideration inventory and expense items
- Implementation of Oracle software at NI locations in Japan, China, Hong Kong, and the UK, including complex inter-company processes in compliance with national legal requirements
- Implementation of the “AP Invoice Scan Solution” to optimize the “Procure to Pay” process
- Provision of a hotline service for all production support issues; PDG supports NI in all Oracle issues (implementation, licenses, hardware)



D-Berlin  
manufacturer of software  
and hardware for computer-  
based audio production  
250 employees



Photo: Native Instruments  
GmbH

- Introduction of Oracle Order Management for property-related billing as a pilot project at the Switzerland branch
- Design, planning, and implementation of centralized and electronic purchasing
- Rollout of Order Management to the complete Götz Group
- Creation of a mobile application to optimize the service and billing process
- Introduction and support of Oracle Business Intelligence



DE-Regensburg  
Services  
Facility Management  
15.500 employees



- Design, planning, and implementation of Oracle EBS 10.7 at the German production plant
- Consolidation and harmonization of all companies on a uniform IT platform (hardware, software, support) based on Oracle EBS 11i
- Upgrade to Oracle EBS 12 together with process enhancements and optimizations, including WMS, iStore, Configurator, and Business Intelligence
- Reengineering of the existing Automotive ERP solution with focus on EDI, Forecasts, Demand Planning
- Introduction of new logistics hub concept and rollout to other companies (including China))
- Pilot project for digitalization of purchasing with Netfira



CH-Olten  
manufacturers of industrial  
switches, complete custom  
HMI panels and interface  
systems  
600 employees



Photo: EAO AG

- Uniform sales information system: 360-degree view of the customer
- Optimization between high delivery capability and low capital commitment
- Margin calculation on the basis of “periodic costs”
- Document management (outgoing and incoming)
- Automated direct deliveries from suppliers to customers with original shipping documents
- Direct purchase via iStore with customer prices and product details
- Unified Warehouse Management System (WMS)
- Implementation of a central financial accounting system with client structure and representation of corporate group structure
- Connection between customers and purchasing platforms via EDI and iDoc/Webservice



D-Coburg, Erfurt, Freiburg,  
Nürnberg  
Distributor of  
transport packaging  
>450 employees



Photo: PRODINGER KG

- Technical Upgrade from EBS R11.5.9 to 12.1.3 in just 4 months
- Workshop und Delta-Training based on Test-Upgrade
- Parallel upgrade of Oracle database 11g
- IT Changeover of HW Platform from 32 to 64 Bit Unix
- Integration of Oracle Financials with heterogenous IT landscape
- Replacement of current Invoice Approval Process with standard EBS R12 functionality and integration of over 60 subsidiaries
- Integration of Invoice scanning solution and Costing Approval process

**K&L**  
RUPPERT

D-Weilheim  
Fashion  
2000 employees



Foto: K&L GmbH & Co. Handels-KG

# Thank you for your kind attention



## We look forward to hearing from you:

### Hamburg

PRIMUS DELPHI GROUP GmbH  
Borsteler Chaussee 43  
D – 22453 Hamburg  
Tel.: +49 (0) 40 / 284 186 15

### Munich

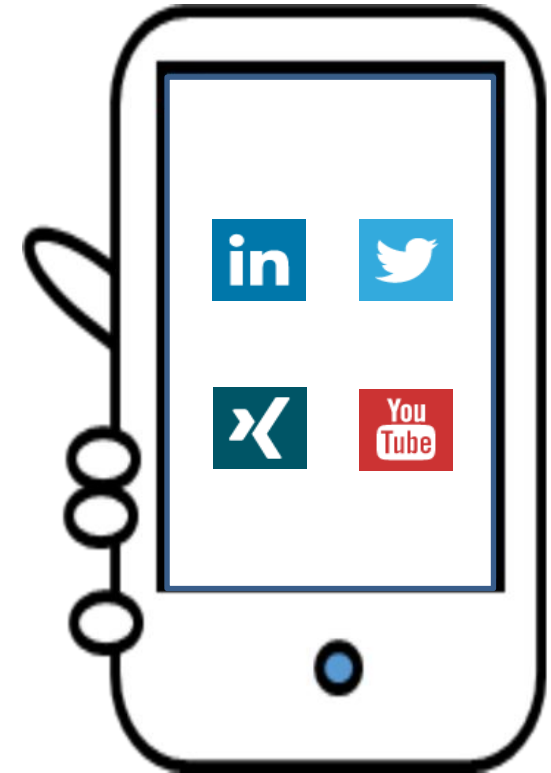
PRIMUS DELPHI GROUP GmbH  
Bergfeldstr. 9  
D - 83627 Holzkirchen  
Tel.: +49 (0) 80 24 / 902 69 0

### Milan

DELPHI ITALY S.r.l.  
Sede Legale:  
Via Gustavo Fara, 26  
I – 20124 Milano

### Bratislava

PDG Slovakia s.r.o.  
Suché mýto 1,  
SK-811 03 Bratislava



# [www.primus-delphi-group.com](http://www.primus-delphi-group.com)